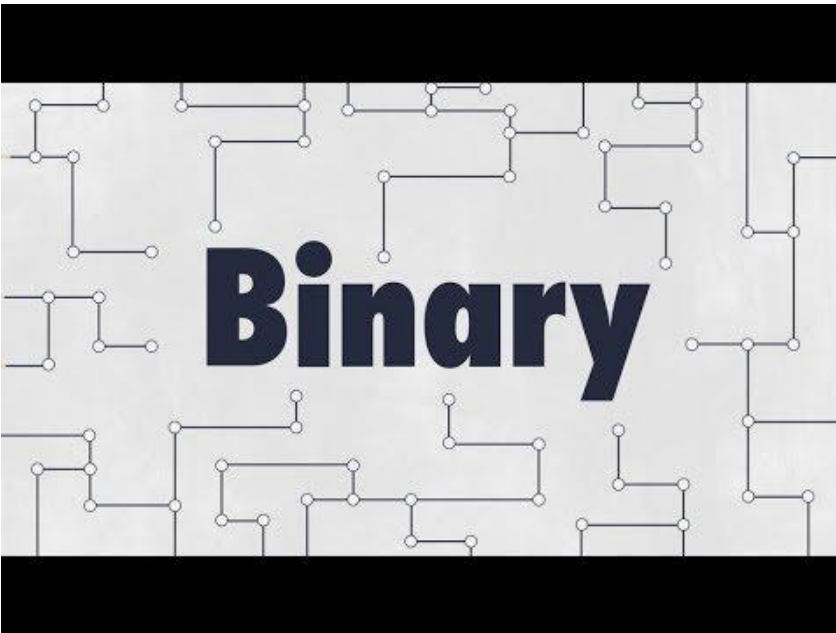
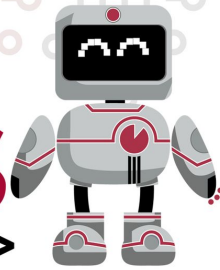


# Binary Bracelets

Learning to code in binary.

[Use this sheet to guide your work](#)

**GCPS**  
<CS for All/>



|   |          |   |          |
|---|----------|---|----------|
| A | ■□■ ■■■□ | N | ■□■ □□■  |
| B | ■□■ ■■□■ | O | ■□■ □□□  |
| C | ■□■ ■■□□ | P | ■□□ ■■■■ |
| D | ■□■ ■□■  | Q | ■□□ ■■■□ |
| E | ■□■ ■□□  | R | ■□□ ■■□■ |
| F | ■□■ ■□□■ | S | ■□□ ■■□□ |
| G | ■□■ ■□□□ | T | ■□□ ■□■  |
| H | ■□■ □■■■ | U | ■□□ ■□■  |
| I | ■□■ □□□  | V | ■□□ ■□■  |
| J | ■□■ □□■  | W | ■□□ ■□□  |
| K | ■□■ □□□  | X | ■□□ □■■■ |
| L | ■□■ □□■  | Y | ■□□ □■■□ |
| M | ■□■ □□□  | Z | ■□□ □■□■ |

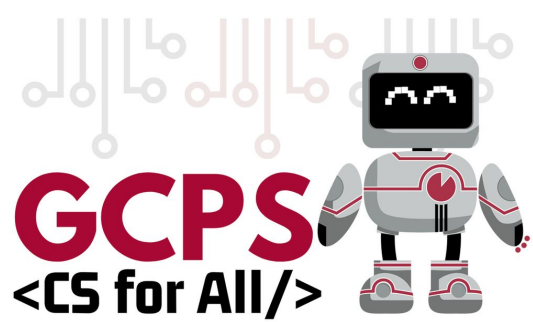
WHAT IS BINARY? (CLICK THE PICTURE ABOVE TO LEARN ABOUT BINARY CODE.)

BINARY DECODER KEY

# Binary Bracelets

Learning to code in binary.

[Use this sheet to guide your work](#)



## ENCODE YOUR INITIAL

1. Locate your first initial on the Binary Decoder Key
2. Pick a color to represent 1 or "on"
3. Color in your binary code to represent your initial

|  |  |  |  |  |  |  |  |
|--|--|--|--|--|--|--|--|
|  |  |  |  |  |  |  |  |
|--|--|--|--|--|--|--|--|

## MAKE YOUR BRACELET

Use the binary representation for your initial to make your bracelet:

Color A represents 0

Color B represents 1

Assemble your bracelet so that the colored beads represent your first initial in binary code